

PROGRAMMING RESOLUTION
LATIMER COUNTY

PROJECT NUMBER
2024-46

FOR COUNTY ROAD (CR) PROJECT TO BE FUNDED FROM COUNTY ROAD AND BRIDGE IMPROVEMENT FUNDS AND FROM THE CORRESPONDING 1103-6-6000-2005 ACCOUNT

Be it remembered that on 24th day of June, 2024, at a regular meeting of the Board of County Commissioners of Latimer County, the following was presented, read, and adopted:

RESOLUTION

WHEREAS, the following type of improvement project has been selected for consideration:

Oil and Chip for a distance of 2 miles on Butterfield Trail (NE120th Rd).
Beginning NS442.5-EW143 Ending NS444.5-EW143

X Funded with 100% County Bridge and Road Improvement (CBRI) Funds (1103-6-6000-2005)
 Contract
X County Built

WHEREAS, the following types of funds shall be applied to the project as follows: CBRI

WHEREAS, the Board of County Commissioners of Latimer County have selected a construction project as follows: CBRI

WHEREAS, the preliminary estimate of the project cost is \$25,000.00

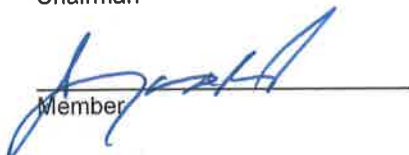
WHEREAS, the Board of County Commissioners has considered the County wide improvement needs and has made the selection of this project accordingly.

NOW, THEREFORE, BE IT RESOLVED that, that the County Commissioners Signatures hereon certify construction shall be in accordance with the current State of Oklahoma statutes for use of County Road and Bridge Improvement Funds.

BOARD OF COUNTY COMMISSIONERS
LATIMER COUNTY, OKLAHOMA

Date: 6/24/24

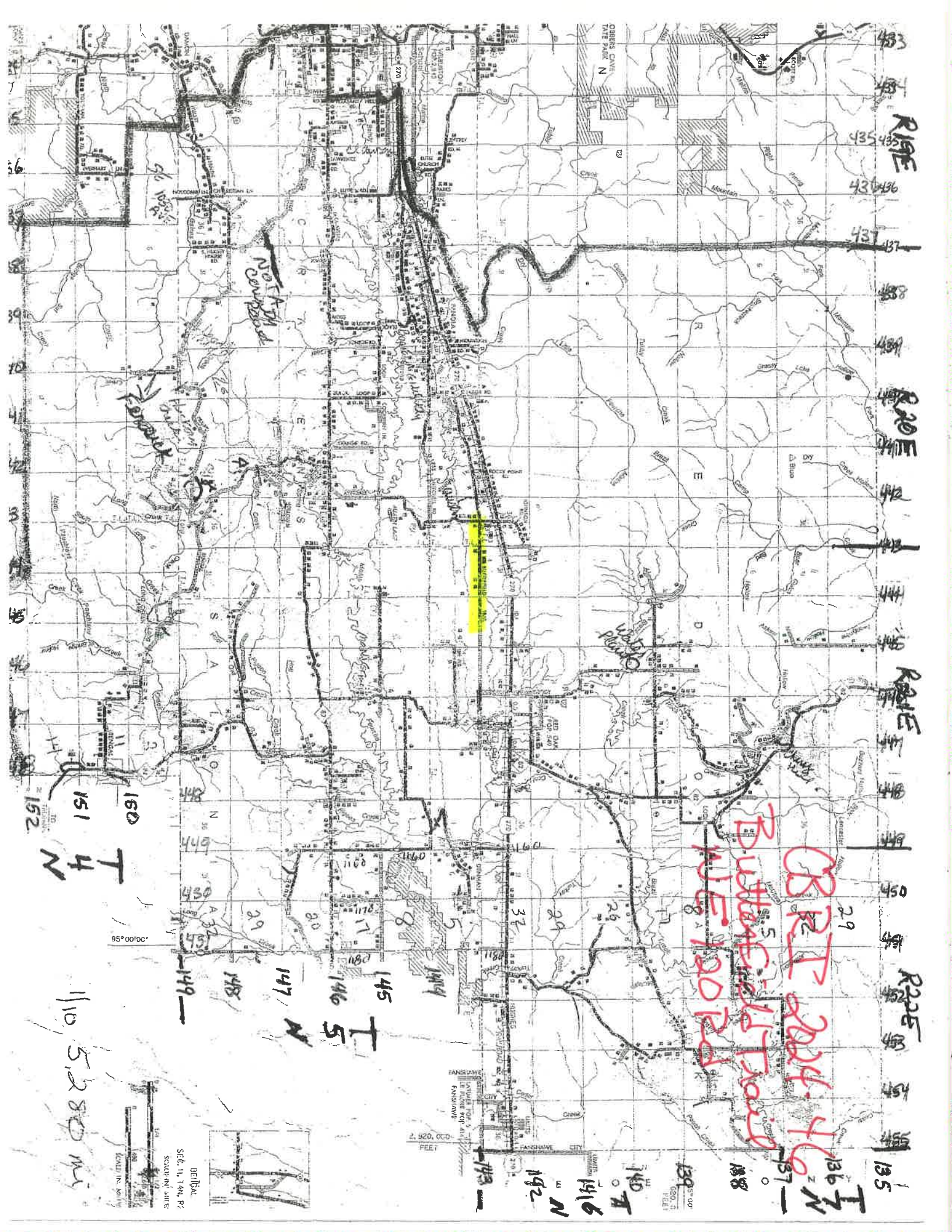

Chairman


Member




Vice-Chairman


Latimer County Clerk



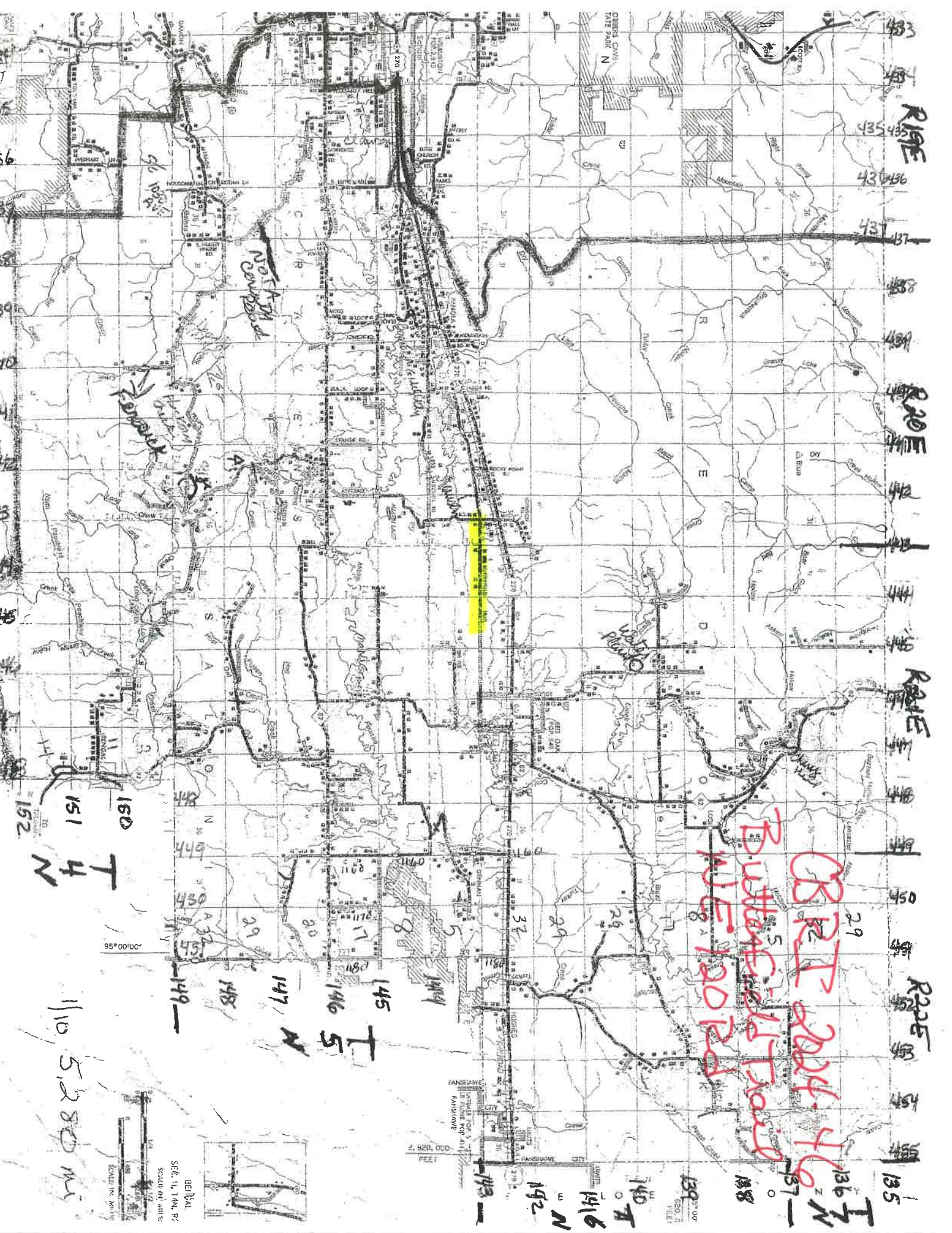
R19E
R20E
R22E
R1E
R2E
R3E
R4E
R5E
R6E
R7E
R8E
R9E
R10E
R11E
R12E
R13E
R14E
R15E
R16E
R17E
R18E
R19E
R20E
R21E
R22E
R23E
R24E
R25E
R26E
R27E
R28E
R29E
R30E
R31E
R32E
R33E
R34E
R35E
R36E
R37E
R38E
R39E
R40E
R41E
R42E
R43E
R44E
R45E
R46E
R47E
R48E
R49E
R50E
R51E
R52E
R53E
R54E
R55E
R56E
R57E
R58E
R59E
R60E
R61E
R62E
R63E
R64E
R65E
R66E
R67E
R68E
R69E
R70E
R71E
R72E
R73E
R74E
R75E
R76E
R77E
R78E
R79E
R80E
R81E
R82E
R83E
R84E
R85E
R86E
R87E
R88E
R89E
R90E
R91E
R92E
R93E
R94E
R95E
R96E
R97E
R98E
R99E
R100E

BRIT 2024-46
PULFORD TRAIL

NORTH Fork

CAMPBELL

WATER PLANT

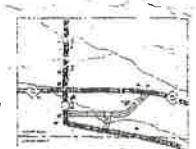


150 T
151 4 N
152

110 5,280 mi

95°00'00"

Scale 1:125,000
Scale in miles



2,520,000 FEET

139 00 00
138 00 00
137 00 00
136 00 00
135 00 00

140 T
141 6 N
142

143
144
145 T
146 S
147 N
148
149