

PROGRAMMING RESOLUTION
LATIMER COUNTY

PROJECT NUMBER
2024-52

FOR COUNTY ROAD (CR) PROJECT TO BE FUNDED FROM COUNTY ROAD AND BRIDGE IMPROVEMENT FUNDS AND FROM THE CORRESPONDING 1103-6-6000-2005 ACCOUNT

Be it remembered that on 5th day of August, 2024, at a regular meeting of the Board of County Commissioners of Latimer County, the following was presented, read, and adopted:

RESOLUTION

WHEREAS, the following type of improvement project has been selected for consideration:

- Asphalt repair for 3 ½ miles on SE Cravens Rd.
- 2.1 miles Beginning NS437.3-EW146 Ending NS435.1-EW146.
- 1.4 miles Beginning NS443-EW146 Ending NS444-EW146.4

X Funded with 100% County Bridge and Road Improvement (CBRI) Funds (1103-6-6000-2005)

Contract
 County Built

WHEREAS, the following types of funds shall be applied to the project as follows: CBRI

WHEREAS, the Board of County Commissioners of Latimer County have selected a construction project as follows: CBRI


WHEREAS, the preliminary estimate of the project cost is \$20,000.00

WHEREAS, the Board of County Commissioners has considered the County wide improvement needs and has made the selection of this project accordingly.

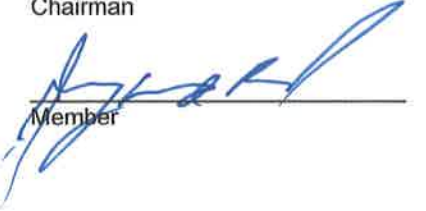
NOW, THEREFORE, BE IT RESOLVED that, that the County Commissioners Signatures hereon certify construction shall be in accordance with the current State of Oklahoma statutes for use of County Road and Bridge Improvement Funds.

BOARD OF COUNTY COMMISSIONERS
LATIMER COUNTY, OKLAHOMA


Date: 08/05/24




 Chairman



 Member

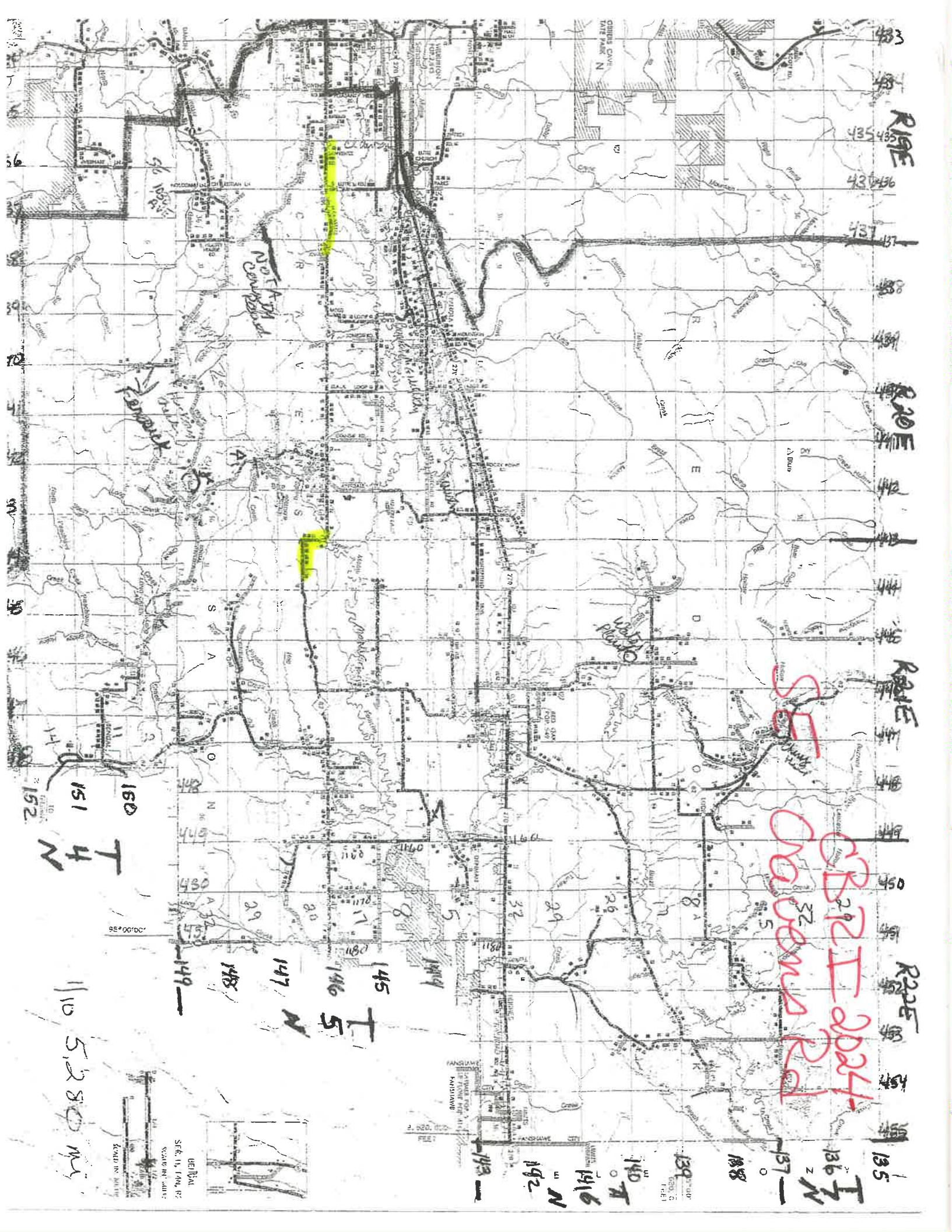


 Vice Chairman



 Attest
 Latimer County Clerk

Vice Mayor of 08/05/24



483

RIPE

435 436

437 437

438

439

RIPE

440

441

442

443

RIPE

444

445

446

447

448

RIPE

449

450

451

452

135

136 T 2 N

138

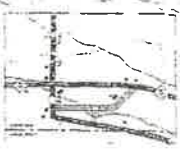
139 00'00"

140 T 0 N

141 6 N

142 N

UTM
SFG 11, 100, 82
SCALE IN METERS
KALDI IN METERS



95°00'00"

149

148

147

146

145

T 5 N

150 T 4 N

151

152

110 5,280 M

SE
SE 2024
Cadenas Rd

NOT A
Compartment

LAKE
POND

CHIRIS CAVE
LAKE PARK N

56 100%

96

95

94

93

92

91

90

89